

INVENIO
DOCEO
PROGREDI



***...thinks in
advance!!!***

The Company, its foundation...

- **FOUNDED IN 2013,**

NUMITALIA offers:

- **CFD, FEM FEA analisys services**
- **Mechanical Design and Structural Design services**
- **CAD CAE consulting to mech industries:**
 - **Drawing blueprints check and production, tolerances analysis**
 - **Technical specs definition, conceptual solution and feasibility studies**

NUMITALIA's *Drive* is technological innovation conjugate with the minumum possible cost

NUMITALIA's must is to provide a certificated design project



The Company, it's strenght point

- **NUMITALIA's Strenght points resides in:**
 - ❑ **EXPERIENCE and EXCELLENCE** of the education story of its engineers whose studies comes from the most prestigious Italian Universities and forged in the challenging comparison with the most advanced Italian Industries;
 - ❑ **FLEXIBILITY** in the use of the tipical tools of the Concurrent Enginering aimed to compress design process
 - ❑ **ORIGINALITY** of the *proposed design solutions*
 - ❑ **QUALITY CERTIFICATION** of the *project itself*
 - ❑ **CONTINUOS FORMATION** of the *technical personal*
 - ❑ **INCLINATION** to *continuos dialogue with Customer*



The Company, it's strenght point



**USE of the best software of
Concurrent Engineering**

**Great inclinaton to problem
solving**

**Great belief in continuos
formation of the engineers**

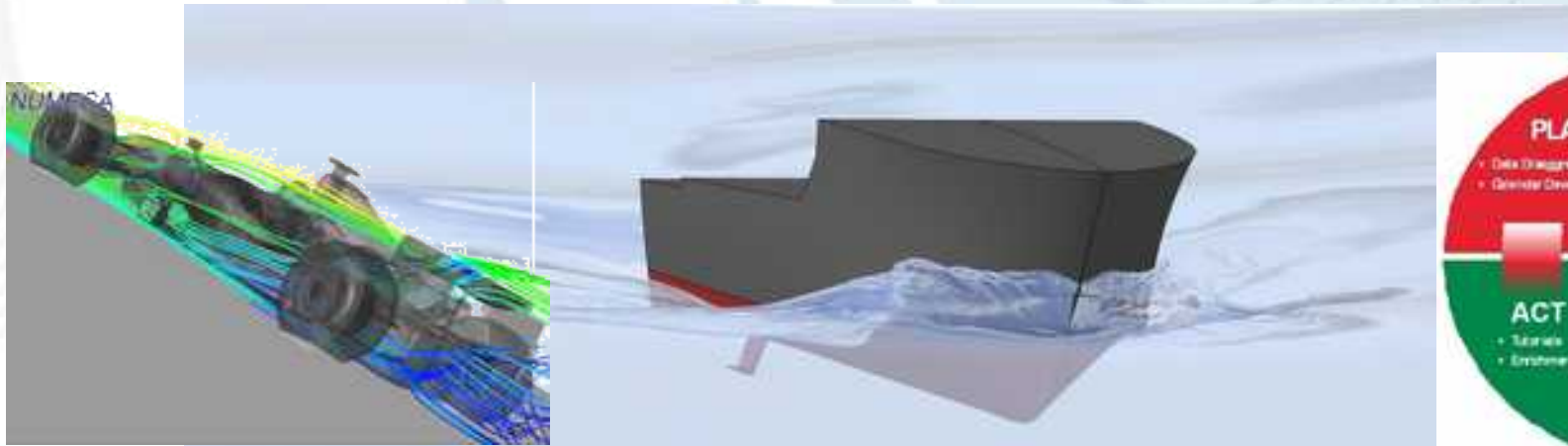


NUMITALIA, thinks in advance...

In CFD world, and even in the Mechanical Design and Integration sector, proposed solution from NUMITALIA ARE:

❑ ***PLANING, ACTING CHECKING***

- ❑ *aiming to compress design process;*
- ❑ *Oriented to get in advance CUSTOMER esigences and to propose suitable Technical Specification and a consecutive Executive Design*
- ❑ ***Every phase of the process is coherently documented and tracked by suitable documents, reports, meeting and conference call..***



NUMITALIA & NUMECA, the best partner for innovation

After almost 10 years of cooperation Numeca International is the primary partner for NUMITALIA.

NUMITALIA is indeed official reseller for Italy for Software and Services related to Numeca's International CFD world.

Numeca, founded by Charles Hirsch in 1991 is one of the three major competitor in the Computational Fluid Dynamic Business.

Numeca offers the suite FINE [Flow Integrated Environment] where dedicated solution for verticalized line of application are covered. In one word “the most suitable software for the specific job”

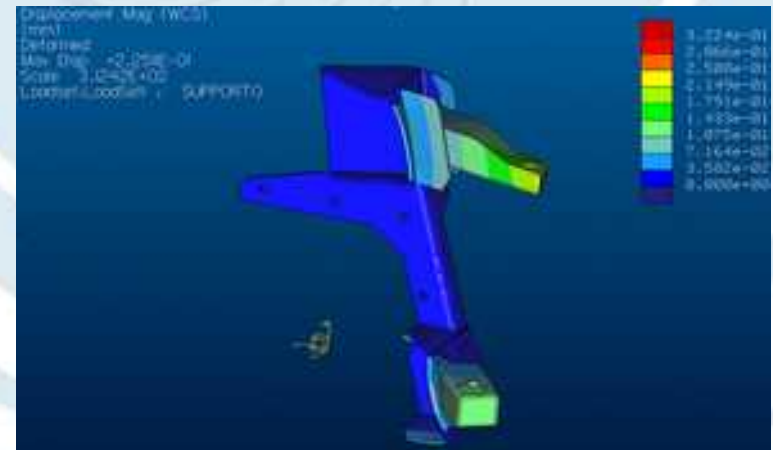
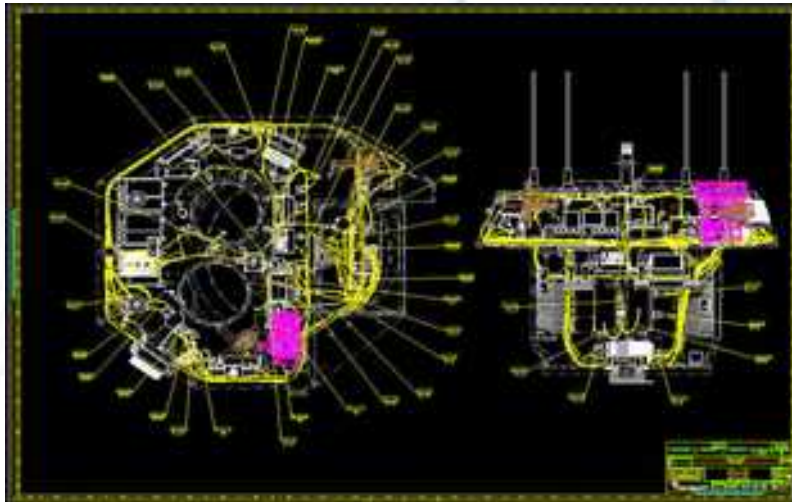


NUMITALIA & MECHANICAL INDUSTRIES

NUMITALIA FORGED ITS ENGINEER CHALLENGING WITH THE MOST INNOVATIVE INDUSTRIES IN ITALY SUCH AS

- **OTOMELARA**
- **WASS**
- **Decima Morara, GD, GIMA**

In all the experience, conceptual design, proposing new solutions and translate into blueprints was required.



NUMITALIA, COMPANY ORGANIZATION



NUMITALIA & NUMECA, the best partner for innovation



Fine Turbo & Design 3d

uRANS solver, full multigrid, for turbomachinery and their optimization



Fine Open

uRANS solver, full multigrid, for general purpose application



Fine Marine

uRANS solver, full multigrid, for naval applications



Fine Acoustic

The solver for tonal, broadband, BEM acoustic field



AutoMesh4G:

In one word, "all you can mesh", yes we can. Structured, Unstructured, full hex or hybrid...

AUTOMESH 4G a glance of...

Capabilities of meshing

STRUCTURED GRIDS WITHIN, AUTOGRID AND IGG

With wizard to generate multiblock topologies on mostlikely any kind of turbomachine

With routines to generate axisymmetric effect, such as bypass, 3D effects such as non axisymmetric endwalls

With templates to generate solid bodies, tipgaps, fillets, cooling holes and more

With templates to generate solid bodies, tipgaps, fillets, cooling holes and more

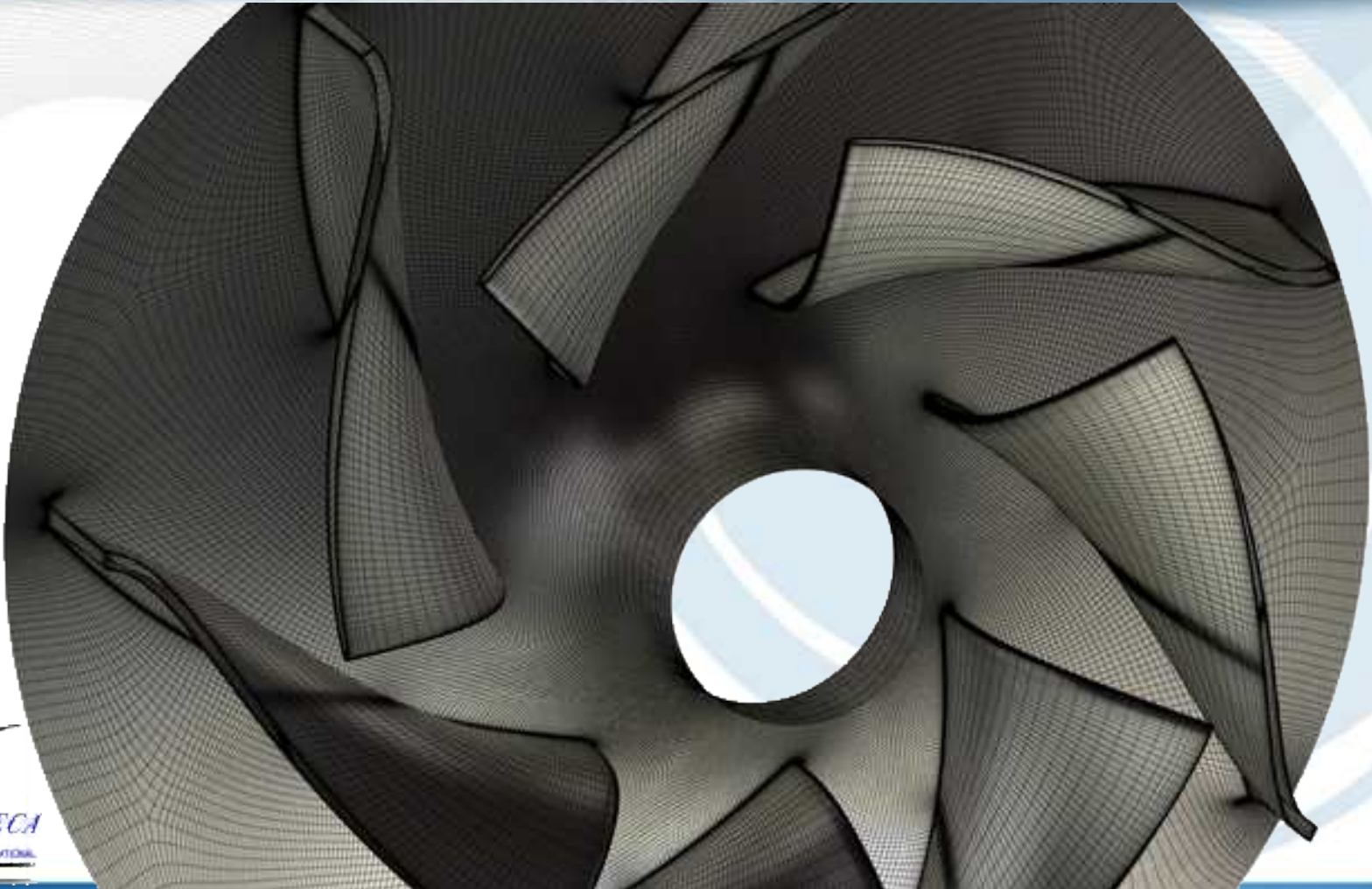
With templates to generate solid bodies, tipgaps, fillets, cooling holes and more

With a powerfull generic grid generator to generate mesh on generic geometries... Such as volutes



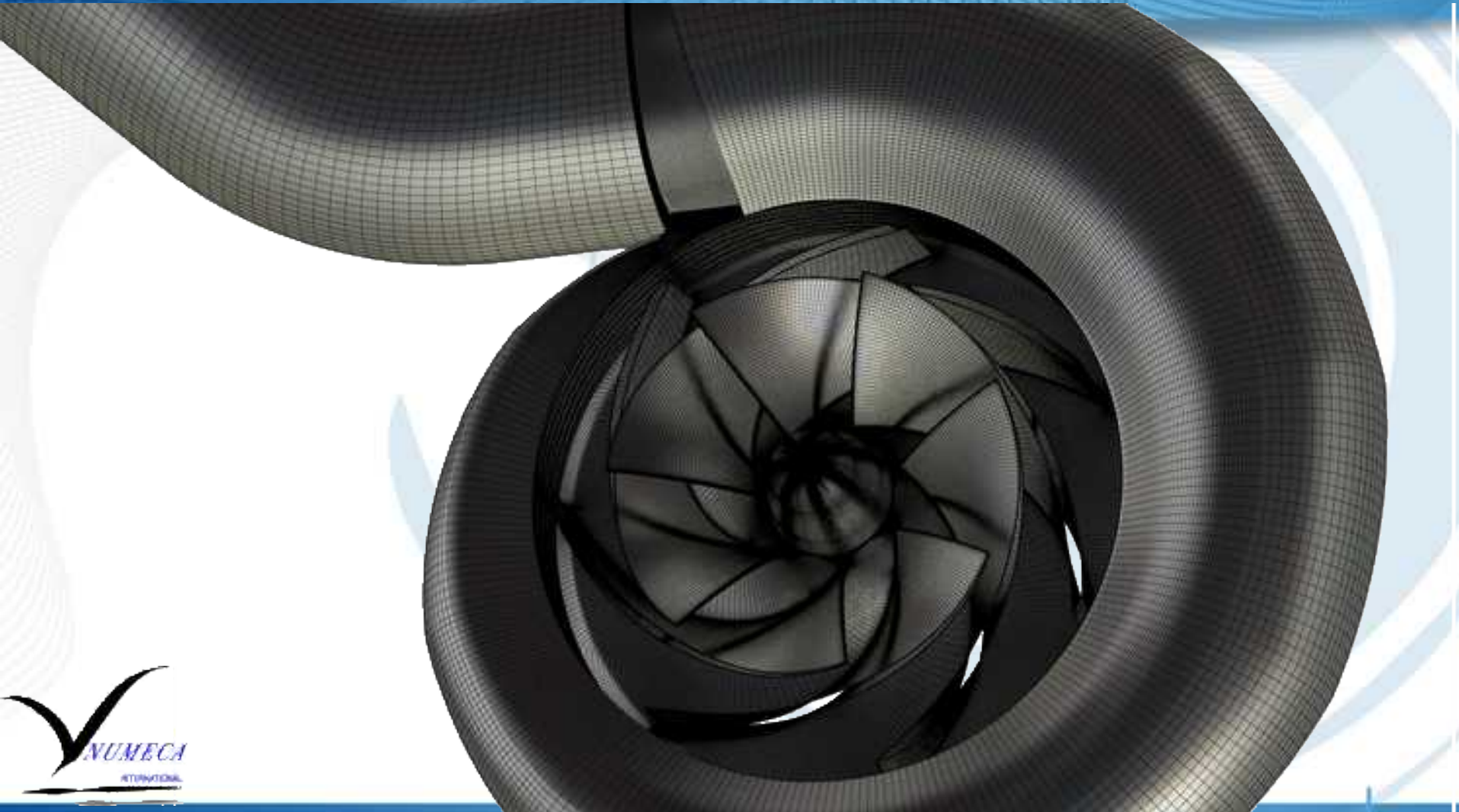
AUTOMESH 4G a glance of...

Capabilities of meshing



AUTOMESH 4G a glance of...

Capabilities of meshing



AUTOMESH 4G a glance of...

Capabilities of meshing

**unSTRUCTURED
Grid in Hexpress**

Full Hex Top down grid generator, with viscous layer insertion, octree based....



AUTOMESH 4G a glance of...

Capabilities of meshing



AUTOMESH 4G a glance of...

Capabilities of meshing

**unSTRUCTURED
Grid in Hexpress
Hybrid**

Parallel no cad treatment, capability to mesh any kind of geometry



NUMECA



A Glance of FINE TURBO & DESIGN3D

FINE TURBO and DESIGN 3D

uRANS structured solver, full multigrid with its own specificity of NLH technology and integration of CPU booster... To shorten convergence time

Fully coupled with the Design 3d suite, ANN optimizer multiobjective multi point

FSI capabilities, Multiphysics, Cavitation, Lagrangian flows, CHT and much more...

Real starting point for its counterpart Fine Acoustic....



A Glance of FINE OPEN

FINE OPEN

uRANS UNstructured solver, full multigrid with its own specificity of NLH technology and integration of CPU booster... To shorten convergence time

OPEN LABS THE REAL UDF GENERATOR COUPLING WITH OPEN LABS COMMUNITY

FSI capabilities, Multiphysics, Cavitation, Lagrangian flows, CHT and much more...



... And for Academics world

**Academic
partnership for
FO**

Unlimited licensing policy for FO, for a real “symbolic price”

**Academic
licensing for FT
and D3D**

One classroom seat for FT and D3D for a small amount

**Academic
dedicated
training**

With a very few €...

And @ NUMECA a dedicated team leader [Colinda Franke]
and her team to support you together with numitalia in
Italy...



NUMITALIA: Quality of our support relies in our experience

We strongly rely in:

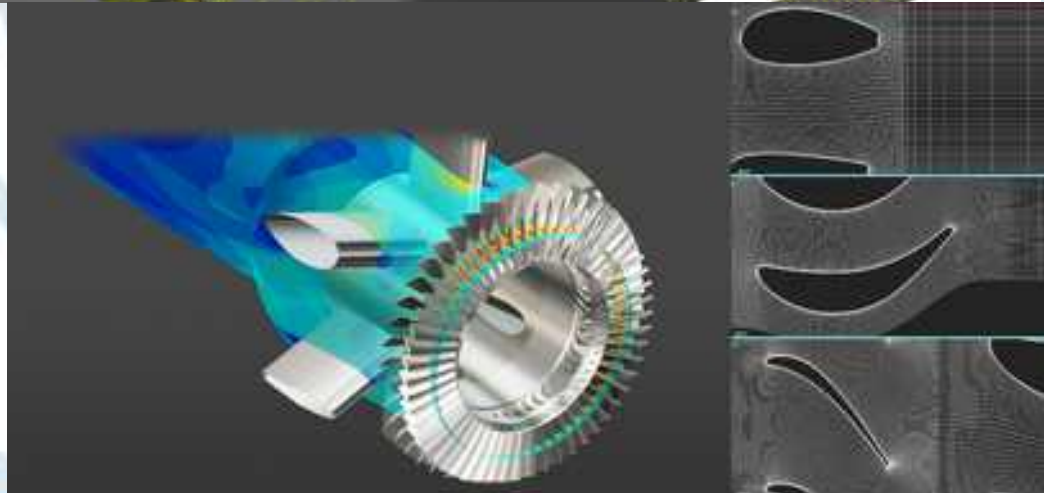
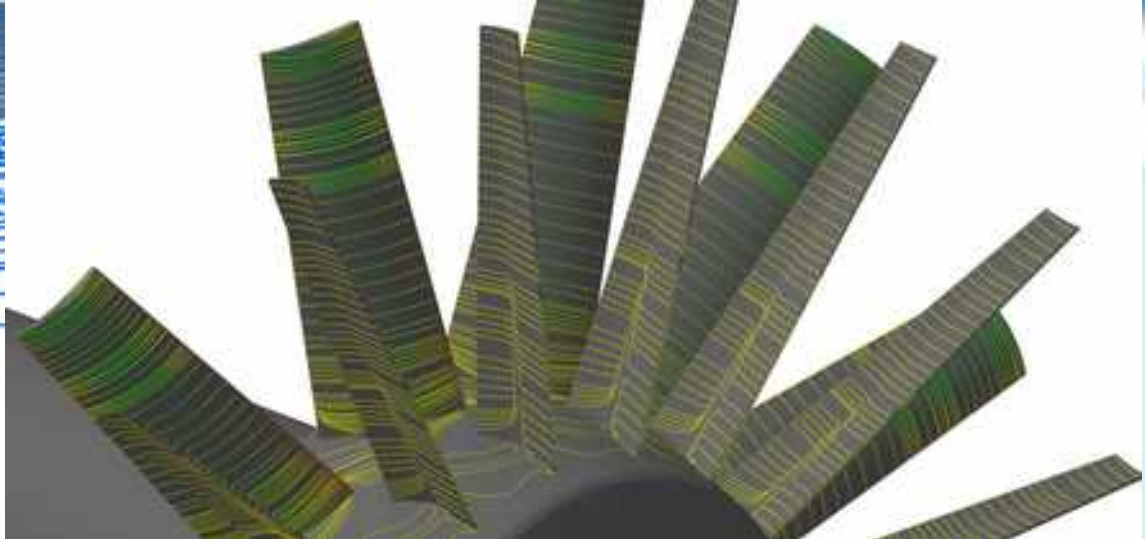
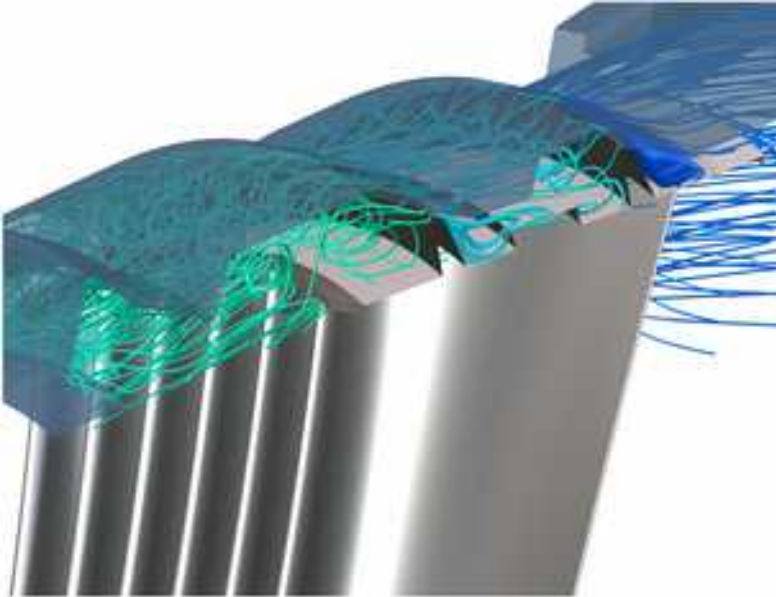
1 CONSULTANCY

As primary source of experience to give better Support to our Numeca customers

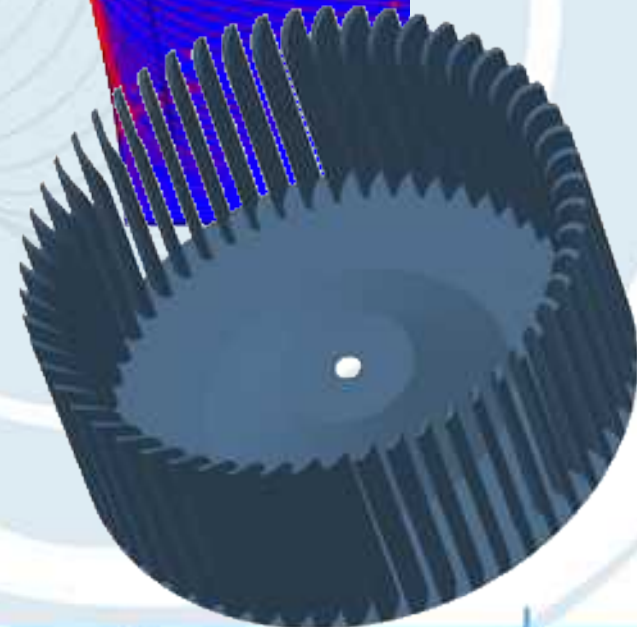
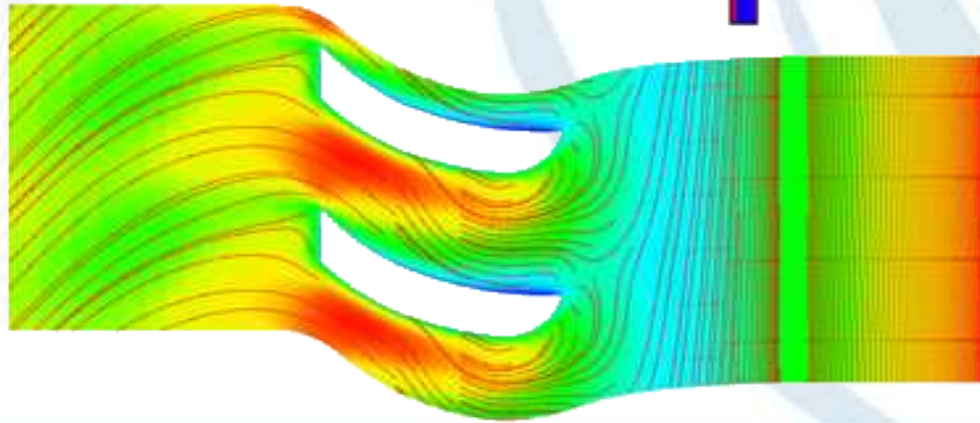
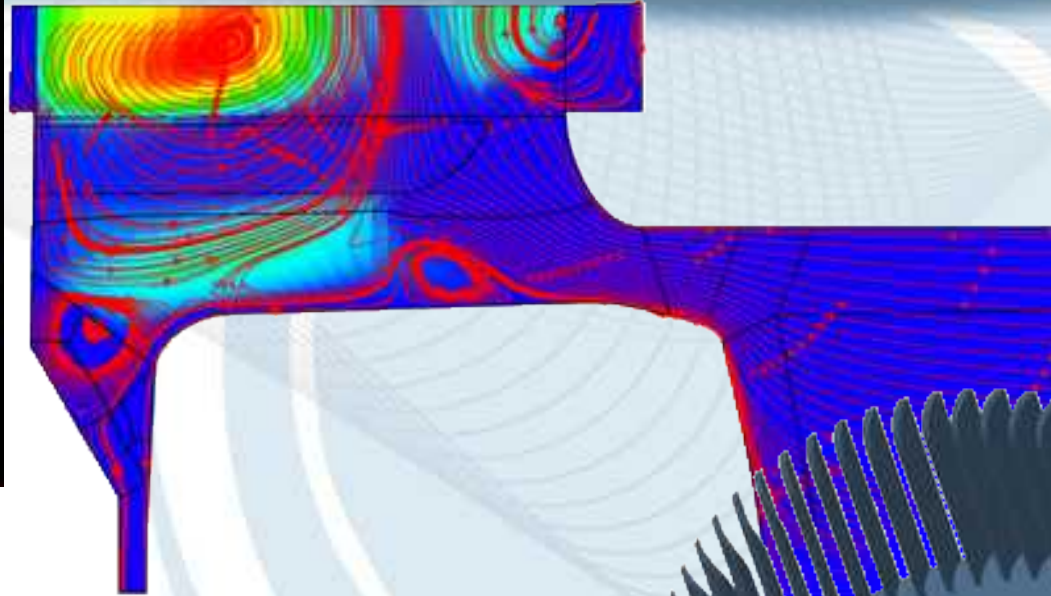
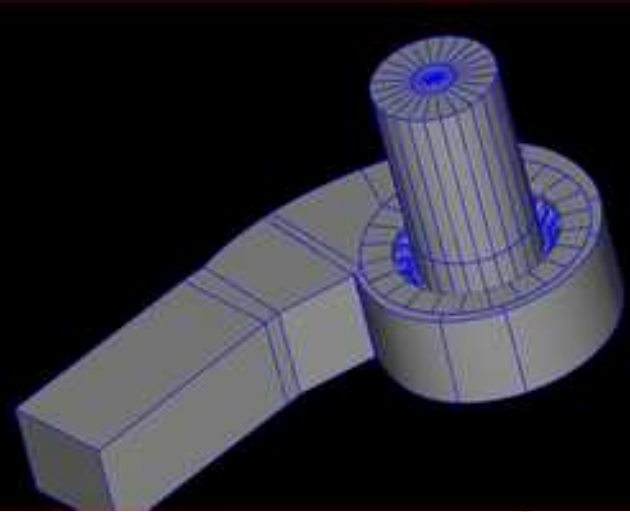
2 ACADEMY

As primary source of “continuous formation” & Fresh open minded engineers to support us and our customers

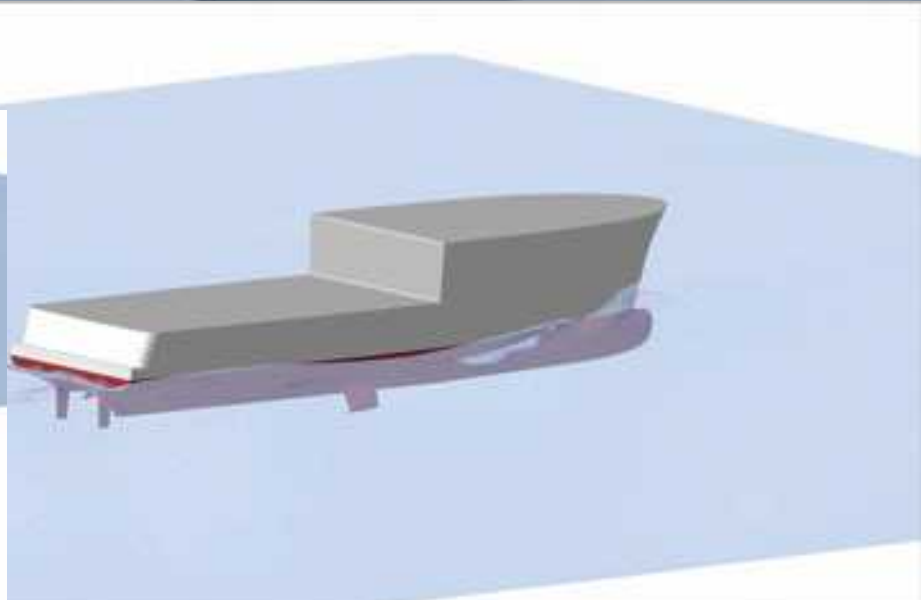
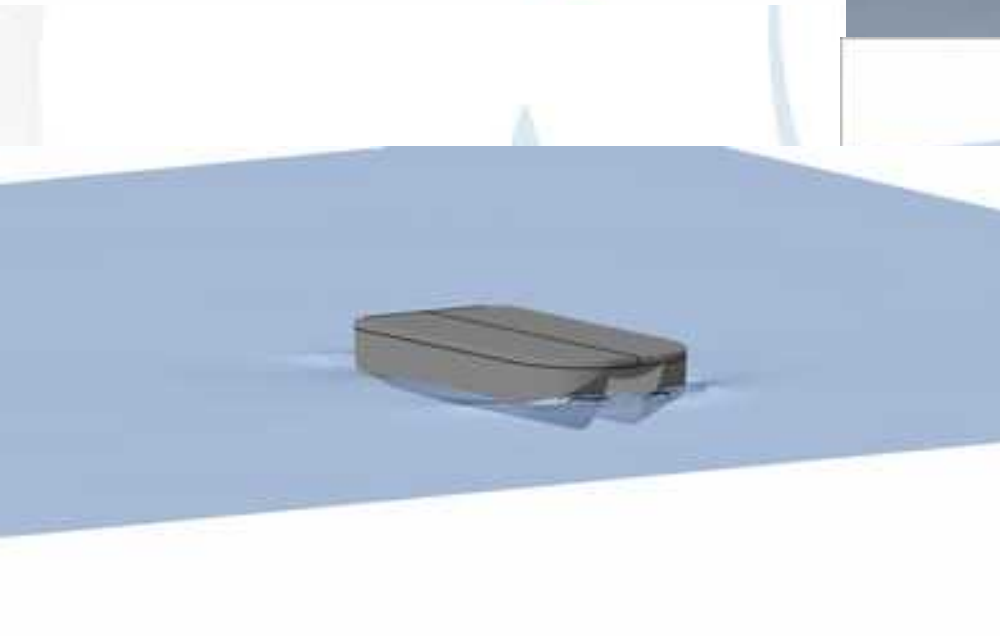
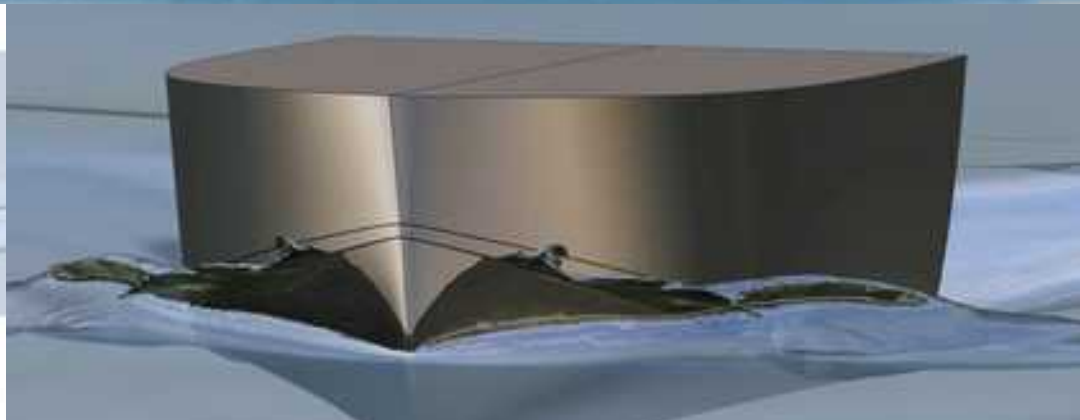
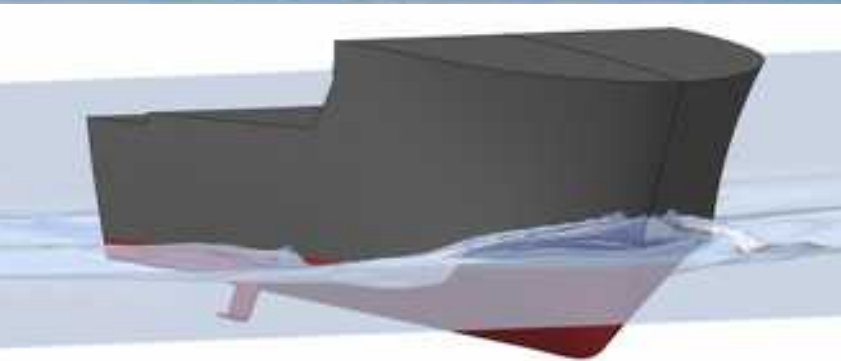
NUMITALIA supporting Turbomachinery Industries [Avio,



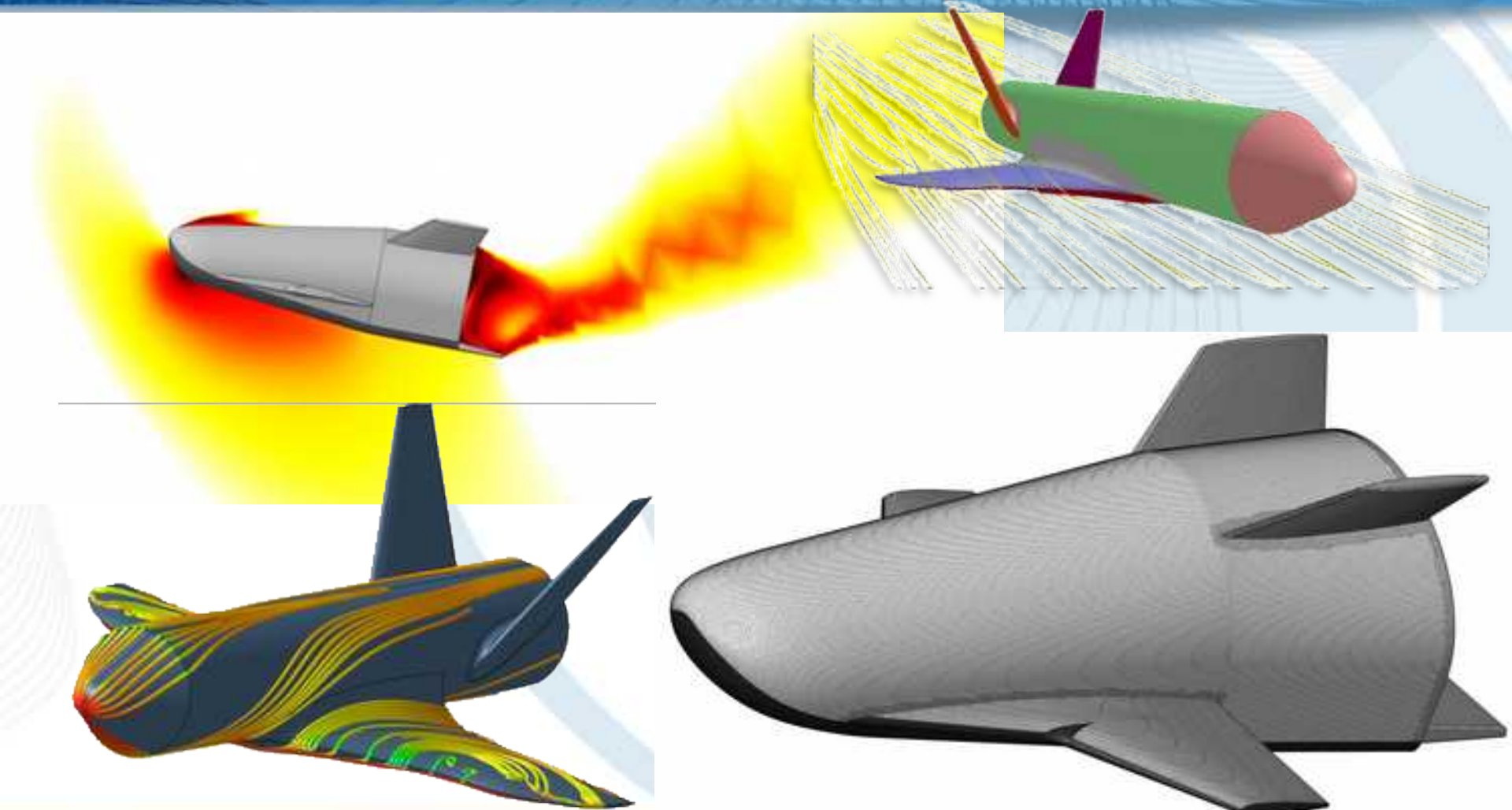
NUMITALIA supporting Aeraulics/consumer Industries



NUMITALIA and Shipyards, Naval Architects



NUMITALIA for Aerospace Industries





SUPPORT & TRAINING

Training courses

- @Numitalia's Office
- @Customer site

Customer support:

- call back in 1 hour
- live calls 9 am-7 pm Monday-Friday
- live calls 9am-1pm Saturday





CUSTOMER IS NOT ALONE:

How do we communicate with customer?

- 1. Periodic Phone calls [weekly to monthly based]**
- 2. ANYMEETING / TeamViewer Conf. Call [on demand]**
- 3. MassMailing Campaign [updates] via MailChimp/Sendinblue**
- 4. If needed “meeting vis a vis”, it’s our pleasure to visit you**

We know that acquiring new tools could be a jump in to the unknown, but we’re here to help you!
In one word Numitalia doesn’t consider Numeca Sales as “drop and forget!”...

NUMITALIA dimostra grande professionalità, coniugata con precisione e puntualità; da apprezzare soprattutto l'adattabilità ai differenti requisiti da parte del committente e l'affidabilità dimostrata. Un esempio da seguire, oltre che una società di engineering a cui rivolgersi con la massima fiducia

NUMITALIA shows the utmost professionalism, together with precision and punctuality; above all, the attitude to adapt the action to the different requirements coming from the Customer and the shown reliability must be appreciated. It's an example to follow, as well as a fully trust engineering company to contact.

Stefano Garbarino, owner di Studio di Ingegneria Navale Garbarino

NUMITALIA ha sempre dimostrato una grande grande professionalità con particolare riguardo alla competenza e alle capacità relazionali, rispondendo con precisione e puntualità alle esigenze del cliente. Da sottolineare ed apprezzare soprattutto la ricerca delle migliori soluzioni per venire incontro ai differenti requisiti da parte del committente garantendo allo stesso tempo affidabilità della soluzione e tempi certi per le soluzioni proposte e implementate. Un esempio di disponibilità e capacità personale da seguire, oltre che una società di ingegneria a cui far riferimento con la massima fiducia.

Cosimo Chiarelli, Head of Aerothermodynamics and Propulsion
BU Space Infrastructures and Transportation, Thales Alenia Space

Attiva Wind

NUMITALIA: Special Package for “NU comers”



NU CUSTOMERS OFFER

1

Online free training

25 free engineering hours on customer's case based training. Following you closely in your daily real life problem

2

One shot benchmark

Example: you have no time, we generate for you grid and set up computation **for free [1 per 1 year maintenance]**

3

Academic benchmark

We provide you MsD students or PhD Researcher from “our” Universities

NUMITALIA, CUSTOMERs POOL



STEFANO GARBARINO

NUMITALIA, contacts

HEADOFFICE

- ☐ In PISA @ Polo Scientifico e Tecnologico
- ☐ *phone and fax @ +39050743502*
- ☐ *mobile @ +393472716031*

GLOBAL

- ☐ **WEB:** www.numitalia.com
- ☐ Share area
- ☐ Monthly newsletter
- ☐ Youtube
- ☐ Facebook, Linkedin, Twitter
- ☐ email: info@numitalia.com

